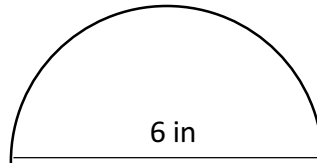
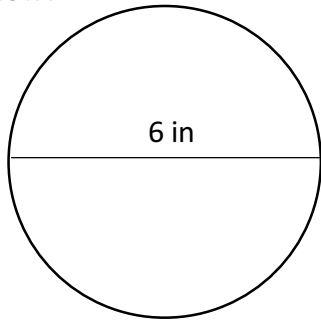


1) The area of the circle below is about 113 square inches. What is the area of the semi-circle shown below?

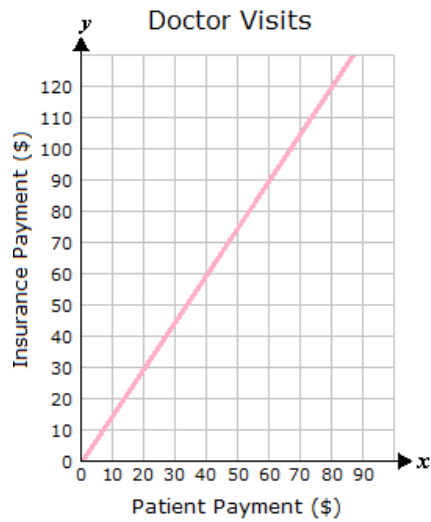
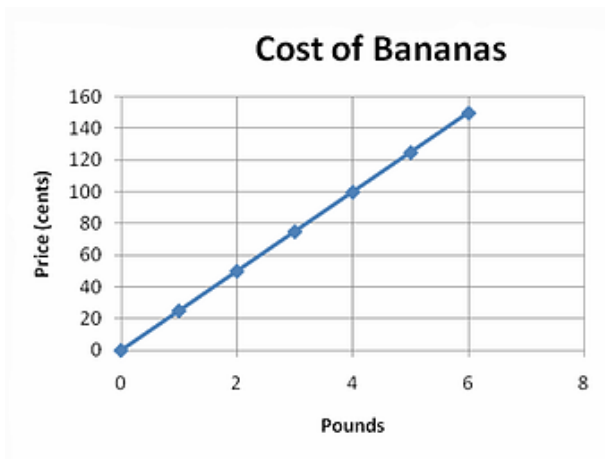


2) How are perimeter and circumference related?

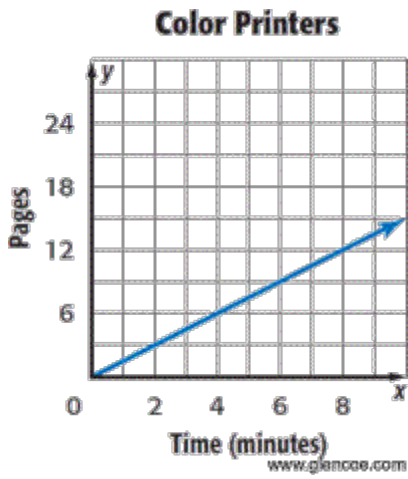
For each of the graphs below, determine if it is proportional. If it is, write an equation. If it is not, explain why.

3) Equation:

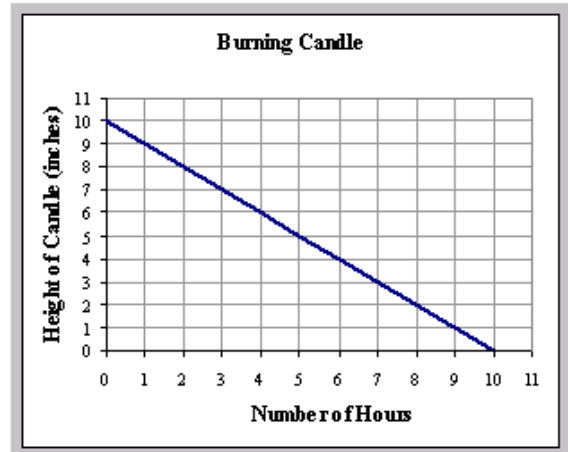
4) Equation:



5) Equation:

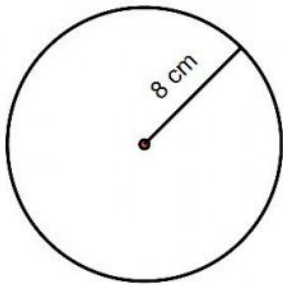


6) Equation:



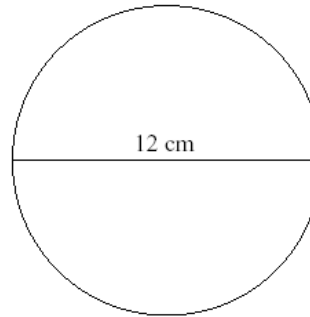
For questions 7 - 10, calculate the circumference of the circles.

7)



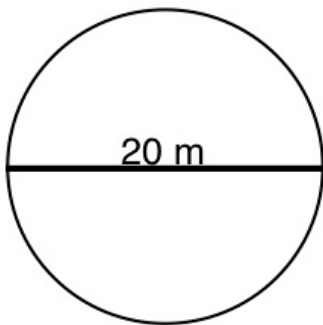
Circumference:

8)



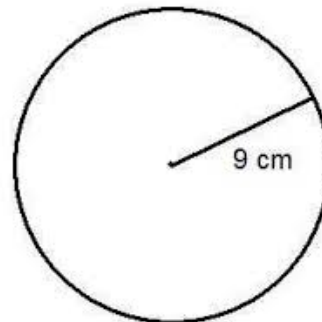
Circumference:

9)



Circumference:

10)



Circumference: